

Cotton Yarn Prices

Center wise market price movement of Cone-combed Yarn, it is observed that:

- i. **Coimbatore:** As evident from **Annexure I** the price of cone combed yarn across all counts increased since January 2021 to May 2022 while shown marginal decline in the month of June & July 2022. A marginal increase in the month of August and then remained same in September 2022 as compared to the previous month. However, there is a sharp decline in the month of October 2022 across all counts and continued to fall in the month of November 2022 and remained same in the month of December 2022. Further there is marginal decrease in the prices of cotton yarn across all counts in the month of January 2023 and remained same from February to June 2023. In July 2023 there is marginal decrease in prices across all counts and remained same till November 2023. In December 2023 there is marginally decrease across all counts and prices remained same in January and February 2024, further in March 2024 there is marginal increase across all counts and remained same in April, May & June 2024. In July 2024 there is marginal decrease across all counts and prices remained same in August, September & October. In the month of the November there is marginal decrease across all counts and prices remained same from December 2024 to March 2025 as compared with previous month.
- ii. **Amritsar:** The price of 20s count reported consistent and gradual rise since January 2021 to May 2022 thereafter till September 2022 marginal decline is noticed. In the prices of 30s & 40s, there is fluctuations reported from January 2021 to July 2022 and decline in 40s till September 2022 while there is sharp decline in 30s count prices from July 2022 to December 2022. There is a marginal increase in 20s count reported in the month of October 2022. However, there is a marginal decrease in the month of November 2022 across all counts. Further there is marginal decrease in the cotton yarn prices of 30s and 40s counts in the month of January 2023 and marginal increase in the prices of same counts in February and March 2023. In April 2023 there is marginal decrease in the prices of cotton yarn across all counts. However, prices of 20s and 30s decreased in the month of May 23 and prices of 40s remained same as compared with previous month. There is marginal increase in the prices of 20s & 30s counts in the Month of the June 23 and marginal decrease in July in the prices of the same count. Further prices of 30s count increased in the month of August and September 23 and then decreased in October & November 23. In December 23 prices marginally increased across 30s count and marginal decrease in January 24, further prices marginally increased in March across 20s and February and March 24 across 30s. In April 24 there is marginal increase across 20s and marginal decrease in 30s cotton yarn count. In May 2024 a marginal increase and in June 2024 marginal decrease and again marginal increase in July 2024 across 30s cotton yarn count and as compared with previous month. In 20s cotton yarn count there is marginal decrease in July as compared with April 2024. Further prices in August 2024 marginally increased across 20s and decreased across 30s cotton yarn count. Prices remained same in September 24 and marginally increased in October 24 across 30s cotton yarn count. Prices decreased in 20s in the month of November whereas in 30s remain same as October 2024. In December 2024 there is marginal decrease among 30s as compared with previous month. In January 2025 there is also marginal decrease among 30s, in February & March prices remained same as compared with previous months.
- iii. **Ahmedabad:** The price of cone combed yarn across all counts increased since January 2021 to May 2022 while shown marginal decline in the month of June 2022 and continued to fall in price in July 2022. Prices of cotton yarn have again started to increase in the month of August 2022 across all the counts but there is a significant decline in the month of September 2022. A sharp decline reported in the price of cotton yarn during the month of October 2022 and increase in the month of November 2022. However, in the month of December 2022 there is marginal increase in prices of 20s count and marginal decrease in prices of 30s and 40s counts. In January 2023 there is decrease in the prices of 20s and 30s while there is marginal increase in the prices of 40s count. In February 2023 there is marginal increase in prices of 20s and 30s, however there is marginal decrease in 40s count. There is marginal increase in 20s, 30s and 40s counts in the month of March as compared with previous month. In April 2023 there is increase in the prices of the 20s and 40s counts and marginal decrease in the 30s. However, there is decrease in May and June 2023 across all counts. Further in July 2023 prices of 20s and 30s decreased however prices increased for 40s cotton yarn count. In the August 2023, prices of 20s and 30s increased and prices of 40s decreased. In September 2023 prices increased across all counts and in October prices increased for 20s count and decreased for 30s and 40s cotton yarn counts and in November 2023 prices increased for 20s while decreased for 30s and 40s cotton yarn counts. In December 23, prices marginally decreased across 20s count and marginally increased across 30s and 40s cotton yarn counts as compared with previous month. Further prices of 20s and 30s remained same and there is marginal decrease across 40s count in the month of January 2024. In February 24 there is marginal increase and in March 2024 there is marginal increase across 20s and 30s while there is marginal decrease in 40s cotton yarn counts. Further in April 24 there is marginal decrease across all counts and in May 24 there is decrease among

20s and 30s cotton yarn counts and marginal increase in 40s. In June 2024 there is marginal increase across all counts and in July 2024 there is marginal decrease in 20s and 30s cotton yarn count and marginal increase in 40s cotton yarn count, further in August prices remained same across all counts as compared with previous month. In September 2024 there is marginal decrease across 20s & 40s cotton yarn counts and marginal increase in prices of 30s cotton yarn count. Further in October 24 prices remained same across all counts as compared with previous month. Whereas in December 24 there is same across all counts and prices and marginal decrease in the January 2025. Further a marginal increase can be seen in the month of February & March 2025 as compared with previous month.

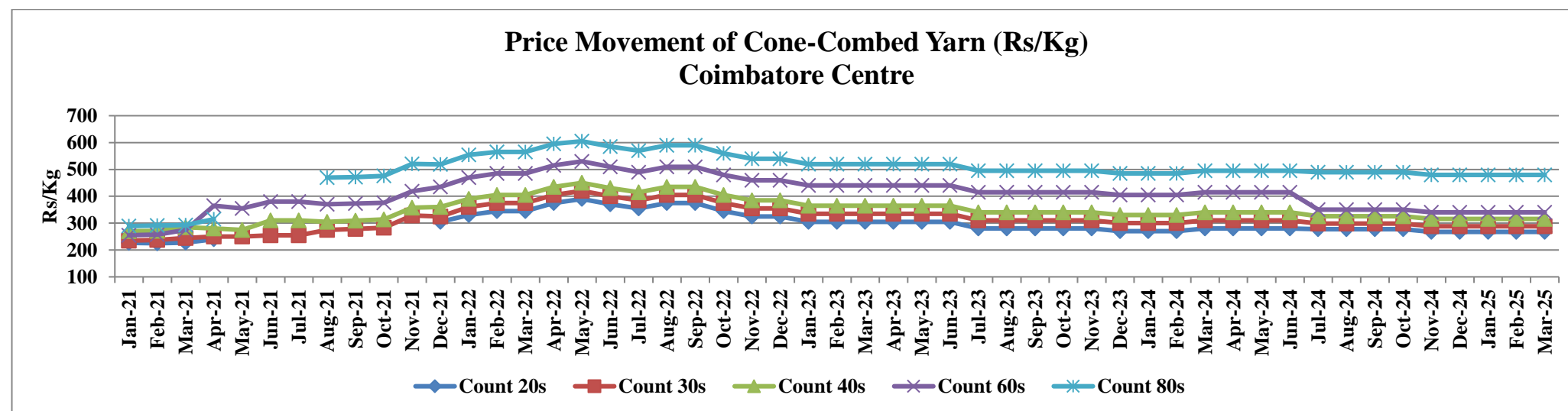
Further, it is also observed from the market price movement of Hosiery- Combed Yarn that:

- i) **Coimbatore:** As can be seen from **Annexure-II** the prices increased MoM across the counts since January 2021 to July 2021 and slid down marginally from August 2021 to October 2021. Prices across the counts again started moving upward marginally from November 2021 to May 2022 and declined from June 2022 to August 2022 and became stagnant in September 2022. A sharp decline in price noticed in the month of October 2022 and November 2022 and remained same in the month of December 2022. Further there is marginal decrease in the prices of cotton yarn across all counts in the month of January 2023 and prices remained same in the month from February to June 2023. In July 2023 there is marginal decrease in prices across all counts and remained same till November 2023. In December 2023 there is marginally decrease across all counts and prices remained same in January and February 2024, further in March 2024 there is marginal increase and remained same in April, May & June 2024 across all counts as compared with previous month. In July 2024 there is marginal increase across all counts and prices remained same in August, September, October. In the November 24 there is marginal decreased across all counts and prices remained same from December 2024 to March 2025 as compared with previous month.
- ii) **Amritsar:** As evident from **Annexure II** the price across all counts reported consistent and gradual MoM marginal rise since January 2021 to June 2022. However, there is a marginal decline across all the counts except for count 20s in the month of July 2022 and a marginal decline across all the counts in August & September 2022. There is marginal increase in the prices of 20s count in October 2022 and decrease in November 2022. There is marginal decrease in 30s and 40s counts from October 2022 to January 2023. Further in February 2023 there is marginal decrease in 20s count and marginal increase in 30s and 40s counts. However, there is marginal increase in the prices across all counts in the month of March and again increased in April across 20s and decrease in 40s counts. Prices of 40s remained same in the month of May. There is marginal decrease in the prices of the 20s & 30s Counts in the Month of the June 2023. Further prices of 20s increased and prices of 40 cotton yarn counts decreased in July 2023. Prices of 20s and 30s increased in the month of August 2023. Further in September, November & December 2023 there is marginal decrease across 30s count prices. In January 2024 there is marginal increase in prices of 30s cotton yarn count and prices remained same in February 24, further in March 24 there is marginal decrease and marginal increase in April and remained same in May, June, July, August, September, October & November 24. In December 2024 there is marginal decreases as compared with previous month. In January & February 2025 there is marginal increase in 30s counts & marginal decrease in the month of March 2025 as compared with the previous month

| Market Price movement of Cone Combed Yarn (Rs/Kg) variety of cotton yarn Centre- wise details: Coimbatore | | | | | | | | | | | | | | | |
|---|-----------|--------------------------------------|---------------------------------|-----------|--------------------------------------|---------------------------------|-----------|--------------------------------------|---------------------------------|-----------|--------------------------------------|---------------------------------|-----------|--------------------------------------|---------------------------------|
| Month | Count 20s | increase or decrease wrt prev months | % growth with respect to Jan 21 | Count 30s | increase or decrease wrt prev months | % growth with respect to Jan 21 | Count 40s | increase or decrease wrt prev months | % growth with respect to Jan 21 | Count 60s | increase or decrease wrt prev months | % growth with respect to Jan 21 | Count 80s | increase or decrease wrt prev months | % growth with respect to Jan 21 |
| Jan-21 | 226 | - | - | 235 | - | - | 270 | - | - | 255 | - | - | 289 | - | - |
| Feb-21 | 225 | ↓ | -0.4 | 237 | ↑ | 0.9 | 271 | ↑ | 0.4 | 257 | ↑ | 0.8 | 291 | ↑ | 0.7 |
| Mar-21 | 227 | ↑ | 0.4 | 245 | ↑ | 4.3 | 285 | ↑ | 5.6 | 275 | ↑ | 7.8 | 293 | ↑ | 1.4 |
| Apr-21 | 240 | ↑ | 6.2 | 250 | ↑ | 6.4 | 280 | ↓ | 3.7 | 365 | ↑ | 43.1 | 315 | ↑ | 9.0 |
| May-21 | - | - | - | 250 | = | 6.4 | 275 | ↓ | 1.9 | 355 | ↓ | 39.2 | - | - | - |
| Jun-21 | - | - | - | 255 | ↑ | 8.5 | 310 | ↑ | 14.8 | 380 | ↑ | 49 | - | - | - |
| Jul-21 | - | - | - | 255 | = | 8.5 | 310 | = | 14.8 | 380 | = | 49 | - | - | - |
| Aug-21 | - | - | - | 275 | ↑ | 17.0 | 305 | ↓ | 13 | 370 | ↓ | 45.1 | 470 | - | 62.6 |
| Sep-21 | - | - | - | 278 | ↑ | 18.3 | 309 | ↑ | 14.4 | 373 | ↑ | 46.3 | 471 | ↑ | 63 |
| Oct-21 | - | - | - | 283 | ↑ | 20.4 | 314 | ↑ | 16.3 | 376 | ↑ | 47.5 | 476 | ↑ | 64.7 |
| Nov-21 | - | - | - | 328 | ↑ | 39.6 | 358 | ↑ | 32.6 | 419 | ↑ | 64.3 | 521 | ↑ | 80.3 |
| Dec-21 | 305 | - | 35 | 325 | ↓ | 38.3 | 360 | ↑ | 33.3 | 435 | ↑ | 70.6 | 519 | ↓ | 79.6 |
| Jan-22 | 330 | ↑ | 46.0 | 360 | ↑ | 53.2 | 390 | ↑ | 44.4 | 470 | ↑ | 84.3 | 554 | ↑ | 91.7 |
| Feb-22 | 345 | ↑ | 52.7 | 375 | ↑ | 59.6 | 405 | ↑ | 50 | 485 | ↑ | 90.2 | 565 | ↑ | 95.5 |
| Mar-22 | 345 | = | 52.7 | 375 | = | 59.6 | 405 | = | 50 | 485 | = | 90.2 | 565 | = | 95.5 |
| Apr-22 | 375 | ↑ | 65.9 | 405 | ↑ | 72.3 | 435 | ↑ | 61.1 | 515 | ↑ | 102 | 595 | ↑ | 105.9 |
| May-22 | 390 | ↑ | 72.6 | 420 | ↑ | 78.7 | 450 | ↑ | 66.7 | 530 | ↑ | 107.8 | 605 | ↑ | 109.3 |
| Jun-22 | 370 | ↓ | 63.7 | 400 | ↓ | 70.2 | 430 | ↓ | 59.3 | 510 | ↓ | 100 | 585 | ↓ | 102.4 |
| Jul-22 | 355 | ↓ | 57.1 | 385 | ↓ | 63.8 | 415 | ↓ | 53.7 | 490 | ↓ | 92.2 | 570 | ↓ | 97.2 |
| Aug-22 | 375 | ↑ | 65.9 | 405 | ↑ | 72.3 | 435 | ↑ | 61.1 | 510 | ↑ | 100 | 590 | ↑ | 104.2 |
| Sep-22 | 375 | = | 65.9 | 405 | = | 72.3 | 435 | = | 61.1 | 510 | = | 100 | 590 | = | 104.2 |
| Oct-22 | 345 | ↓ | 52.65 | 375 | ↓ | 59.6 | 405 | ↓ | 50 | 480 | ↓ | 88.2 | 560 | ↓ | 93.8 |
| Nov-22 | 325 | ↓ | 43.81 | 355 | ↓ | 51.1 | 385 | ↓ | 42.6 | 460 | ↓ | 80.4 | 540 | ↓ | 86.9 |
| Dec-22 | 325 | = | 43.81 | 355 | = | 51.1 | 385 | = | 42.6 | 460 | = | 80.4 | 540 | = | 86.9 |
| Jan-23 | 305 | ↓ | 34.96 | 335 | ↓ | 42.6 | 365 | ↓ | 35.2 | 440 | ↓ | 72.5 | 520 | ↓ | 79.9 |
| Feb-23 | 305 | = | 34.96 | 335 | = | 42.6 | 365 | = | 35.2 | 440 | = | 72.5 | 520 | = | 79.9 |
| Mar-23 | 305 | = | 34.96 | 335 | = | 42.6 | 365 | = | 35.2 | 440 | = | 72.5 | 520 | = | 79.9 |
| Apr-23 | 305 | = | 34.96 | 335 | = | 42.6 | 365 | = | 35.2 | 440 | = | 72.5 | 520 | = | 79.9 |
| May-23 | 305 | = | 34.96 | 335 | = | 42.6 | 365 | = | 35.2 | 440 | = | 72.5 | 520 | = | 79.9 |
| June-23 | 305 | = | 34.96 | 335 | = | 42.6 | 365 | = | 35.2 | 440 | = | 72.5 | 520 | = | 79.9 |
| July-23 | 280 | ↓ | 23.89 | 310 | ↓ | 31.9 | 340 | ↓ | 25.9 | 415 | ↓ | 62.7 | 495 | ↓ | 71.3 |
| Aug-23 | 280 | = | 23.89 | 310 | = | 31.9 | 340 | = | 25.9 | 415 | = | 62.7 | 495 | = | 71.3 |

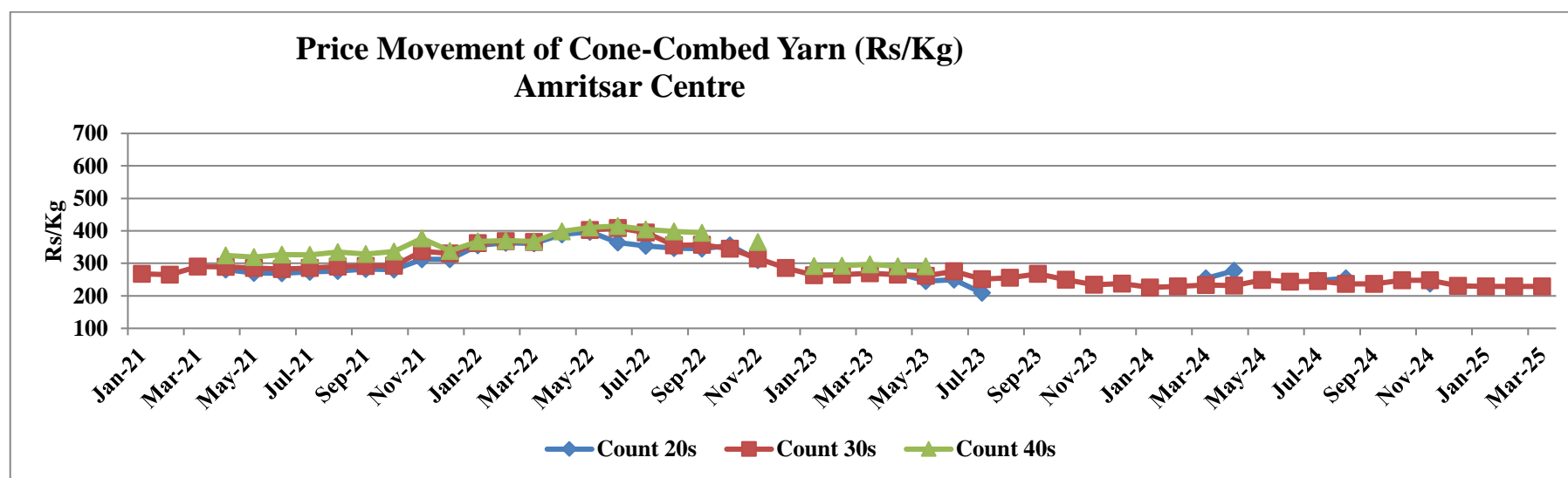
| | | | | | | | | | | | | | | | |
|--------|-----|---|-------|-----|---|------|-----|---|------|-----|---|------|-----|---|------|
| Sep-23 | 280 | = | 23.89 | 310 | = | 31.9 | 340 | = | 25.9 | 415 | = | 62.7 | 495 | = | 71.3 |
| Oct-23 | 280 | = | 23.89 | 310 | = | 31.9 | 340 | = | 25.9 | 415 | = | 62.7 | 495 | = | 71.3 |
| Nov-23 | 280 | = | 23.89 | 310 | = | 31.9 | 340 | = | 25.9 | 415 | = | 62.7 | 495 | = | 71.3 |
| Dec-23 | 270 | ↓ | 19.47 | 300 | ↓ | 27.7 | 330 | ↓ | 22.2 | 405 | ↓ | 58.8 | 485 | ↓ | 67.8 |
| Jan-24 | 270 | = | 19.47 | 300 | = | 27.7 | 330 | = | 22.2 | 405 | = | 58.8 | 485 | = | 67.8 |
| Feb-24 | 270 | = | 19.47 | 300 | = | 27.7 | 330 | = | 22.2 | 405 | = | 58.8 | 485 | = | 67.8 |
| Mar-24 | 280 | ↑ | 23.89 | 310 | ↑ | 31.9 | 340 | ↑ | 25.9 | 415 | ↑ | 62.7 | 495 | ↑ | 71.3 |
| Apr-24 | 280 | = | 23.89 | 310 | = | 31.9 | 340 | = | 25.9 | 415 | = | 62.7 | 495 | = | 71.3 |
| May-24 | 280 | = | 23.89 | 310 | = | 31.9 | 340 | = | 25.9 | 415 | = | 62.7 | 495 | = | 71.3 |
| Jun-24 | 280 | = | 23.89 | 310 | = | 31.9 | 340 | = | 25.9 | 415 | = | 62.7 | 495 | = | 71.3 |
| Jul-24 | 277 | ↓ | 22.57 | 298 | ↓ | 26.8 | 326 | ↓ | 20.7 | 350 | ↓ | 37.3 | 490 | ↓ | 69.6 |
| Aug-24 | 277 | = | 22.57 | 298 | = | 26.8 | 326 | = | 20.7 | 350 | = | 37.3 | 490 | = | 69.6 |
| Sep-24 | 277 | = | 22.57 | 298 | = | 26.8 | 326 | = | 20.7 | 350 | = | 37.3 | 490 | = | 69.6 |
| Oct-24 | 277 | = | 22.57 | 298 | = | 26.8 | 326 | = | 20.7 | 350 | = | 37.3 | 490 | = | 69.6 |
| Nov-24 | 267 | ↓ | 18.14 | 288 | ↓ | 22.6 | 316 | ↓ | 17 | 340 | ↓ | 33.3 | 480 | ↓ | 66.1 |
| Dec-24 | 267 | = | 18.14 | 288 | = | 22.6 | 316 | = | 17 | 340 | = | 33.3 | 480 | = | 66.1 |
| Jan-25 | 267 | = | 18.14 | 288 | = | 22.6 | 316 | = | 17 | 340 | = | 33.3 | 480 | = | 66.1 |
| Feb-25 | 267 | = | 18.14 | 288 | = | 22.6 | 316 | = | 17 | 340 | = | 33.3 | 480 | = | 66.1 |
| Mar-25 | 267 | = | 18.14 | 288 | = | 22.6 | 316 | = | 17 | 340 | = | 33.3 | 480 | = | 66.1 |

Source: Regional Office of the Textile Commissioner, Coimbatore



| Market Price movement of Cone Combed Yarn (Rs/Kg) variety of cotton yarn Centre- wise details: Amritsar | | | | | | | | | |
|---|-----------|-------------------------------------|---------------------------------|-----------|-------------------------------------|---------------------------------|-----------|-------------------------------------|---------------------------------|
| Month | Count 20s | increase or decrease wrt prev month | % growth with respect to Jan 21 | Count 30s | increase or decrease wrt prev month | % growth with respect to Jan 21 | Count 40s | increase or decrease wrt prev month | % growth with respect to Jan 21 |
| Jan-21 | - | - | - | 268 | - | - | - | - | - |
| Feb-21 | - | - | - | 265 | ↓ | -1.1 | - | - | - |
| Mar-21 | - | - | - | 290 | ↑ | 8.2 | - | - | - |
| Apr-21 | 281 | - | - | 289 | ↓ | 7.8 | 324 | - | - |
| May-21 | 270 | ↓ | -3.9 | 286 | ↓ | 6.7 | 319 | ↓ | -1.5 |
| Jun-21 | 269 | ↓ | -4.3 | 282 | ↓ | 5.2 | 327 | ↑ | 0.9 |
| Jul-21 | 274 | ↑ | -2.5 | 286 | ↑ | 6.7 | 326 | ↓ | 0.6 |
| Aug-21 | 276 | ↑ | -1.8 | 290 | ↑ | 8.2 | 335 | ↑ | 3.4 |
| Sep-21 | 282 | ↑ | 0.4 | 292 | ↑ | 9.0 | 329 | ↓ | 1.5 |
| Oct-21 | 281 | ↓ | 0 | 293 | ↑ | 9.3 | 336 | ↑ | 3.7 |
| Nov-21 | 312 | ↑ | 11 | 337 | ↑ | 25.7 | 377 | ↑ | 16.4 |
| Dec-21 | 312 | = | 11 | 330 | ↓ | 23.1 | 338 | ↓ | 4.3 |
| Jan-22 | 355 | ↑ | 26.3 | 362 | ↑ | 35.1 | 367 | ↑ | 13.3 |
| Feb-22 | 363 | ↑ | 29.2 | 368 | ↑ | 37.3 | 370 | ↑ | 14.2 |
| Mar-22 | 361 | ↓ | 28.5 | 366 | ↓ | 36.6 | 367 | ↓ | 13.3 |
| Apr-22 | 389 | ↑ | 38.4 | - | - | - | 398 | ↑ | 22.8 |
| May-22 | 397 | ↑ | 41.3 | 403 | — | 50.4 | 410 | ↑ | 26.5 |
| Jun-22 | 364 | ↓ | 29.5 | 409 | ↑ | 52.6 | 415 | ↑ | 28.1 |
| Jul-22 | 354 | ↓ | 26 | 395 | ↓ | 47.4 | 404 | ↓ | 24.7 |
| Aug-22 | 347 | ↓ | 23.5 | 355 | ↓ | 32.5 | 398 | ↓ | 22.8 |
| Sep-22 | 345 | ↓ | 22.8 | 357 | ↑ | 33.2 | 394 | ↓ | 21.6 |
| Oct-22 | 355 | ↑ | 26.3 | 345 | ↓ | 28.7 | - | - | - |
| Nov-22 | 310 | ↓ | 10.3 | 315 | ↓ | 17.5 | 366 | — | 13 |
| Dec-22 | - | - | - | 286 | ↓ | 6.71 | - | - | - |
| Jan-23 | - | - | - | 263 | ↓ | -1.87 | 292 | — | -9.9 |
| Feb-23 | - | - | - | 265 | ↑ | -1.12 | 293 | ↑ | -9.6 |
| Mar-23 | - | - | - | 269 | ↑ | 0.37 | 297 | ↑ | -8.3 |
| Apr-23 | 269 | - | -4.3 | 265 | ↓ | -1.12 | 291 | ↓ | -10.2 |
| May-23 | 245 | ↓ | -12.80 | 262 | ↓ | -2.24 | 291 | = | -10.2 |
| June-23 | 250 | ↑ | -11.0 | 275 | ↑ | 2.61 | - | - | - |
| July-23 | 209 | ↓ | -25.6 | 251 | ↓ | -6.34 | - | - | - |
| Aug-23 | - | - | - | 256 | ↑ | -4.48 | - | - | - |

| | | | | | | | | | |
|---|-----|---|-------|-----|---|--------|---|---|---|
| Sep-23 | - | - | - | 268 | ↑ | 0.00 | - | - | - |
| Oct-23 | - | - | - | 250 | ↓ | -6.72 | - | - | - |
| Nov-23 | - | - | - | 234 | ↓ | -12.69 | - | - | - |
| Dec-23 | - | - | - | 238 | ↑ | -11.19 | - | - | - |
| Jan-24 | - | - | - | 226 | ↓ | -15.67 | - | - | - |
| Feb-24 | - | - | - | 229 | ↑ | -14.55 | - | - | - |
| Mar-24 | 254 | - | -9.6 | 233 | ↑ | -13.06 | - | - | - |
| Apr-24 | 277 | ↑ | -1.4 | 232 | ↓ | -13.43 | - | - | - |
| May-24 | - | - | - | 249 | ↑ | -7.09 | - | - | - |
| Jun-24 | - | - | - | 244 | ↓ | -8.96 | - | - | - |
| Jul-24 | 247 | - | -12.1 | 245 | ↑ | -8.58 | - | - | - |
| Aug-24 | 254 | ↑ | -9.6 | 237 | ↓ | -11.57 | - | - | - |
| Sep-24 | - | - | - | 237 | = | -11.57 | - | - | - |
| Oct-24 | - | - | - | 248 | ↑ | -7.46 | - | - | - |
| Nov-24 | 238 | ↓ | -15.3 | 248 | = | -7.46 | - | - | - |
| Dec-24 | - | - | - | 231 | ↓ | -13.81 | - | - | - |
| Jan-25 | - | - | - | 229 | ↓ | -14.55 | - | - | - |
| Feb-25 | - | - | - | 229 | = | -14.55 | - | - | - |
| Mar-25 | - | - | - | 229 | = | -14.55 | - | - | - |
| Source: Regional Office of the Textile Commissioner, Amritsar | | | | | | | | | |

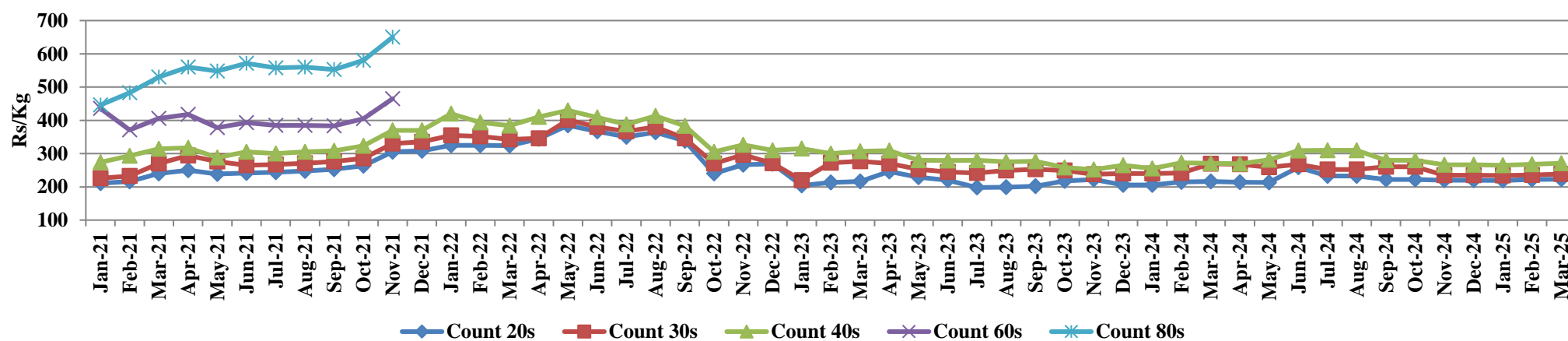


| Market Price movement of Cone Combed Yarn (Rs/Kg) variety of cotton yarn Centre- wise details: Ahmedabad | | | | | | | | | | | | | | | |
|--|-----------|--------------------------------------|---------------------------------|-----------|--------------------------------------|---------------------------------|-----------|--------------------------------------|---------------------------------|-----------|--------------------------------------|---------------------------------|-----------|--------------------------------------|---------------------------------|
| Month | Count 20s | %increase or decrease wrt prev month | % growth with respect to Jan 21 | Count 30s | %increase or decrease wrt prev month | % growth with respect to Jan 21 | Count 40s | %increase or decrease wrt prev month | % growth with respect to Jan 21 | Count 60s | %increase or decrease wrt prev month | % growth with respect to Jan 21 | Count 80s | %increase or decrease wrt prev month | % growth with respect to Jan 21 |
| Jan-21 | 211 | - | - | 226 | - | - | 274 | - | - | 436 | - | - | 446 | - | - |
| Feb-21 | 216 | ↑ | 2.4 | 233 | ↑ | 3.1 | 293 | ↑ | 6.9 | 371 | ↓ | -14.9 | 483 | ↑ | 8.3 |
| Mar-21 | 240 | ↑ | 13.7 | 270 | ↑ | 19.5 | 314 | ↑ | 14.6 | 406 | ↑ | -6.9 | 530 | ↑ | 18.8 |
| Apr-21 | 250 | ↑ | 18.5 | 294 | ↑ | 30.1 | 317 | ↑ | 15.7 | 418 | ↑ | -4.1 | 560 | ↑ | 25.6 |
| May-21 | 239 | ↓ | 13.3 | 276 | ↓ | 22.1 | 288 | ↓ | 5.1 | 378 | ↓ | -13.3 | 548 | ↓ | 22.9 |
| Jun-21 | 242 | ↑ | 14.7 | 265 | ↓ | 17.3 | 305 | ↑ | 11.3 | 393 | ↑ | -9.9 | 571 | ↑ | 28.0 |
| Jul-21 | 244 | ↑ | 15.6 | 267 | ↑ | 18.1 | 300 | ↓ | 9.5 | 385 | ↓ | -11.7 | 558 | ↓ | 25.1 |
| Aug-21 | 248 | ↑ | 17.5 | 271 | ↑ | 19.9 | 305 | ↑ | 11.3 | 385 | = | -11.7 | 560 | ↑ | 25.6 |
| Sep-21 | 253 | ↑ | 19.9 | 276 | ↑ | 22.1 | 308 | ↑ | 12.4 | 383 | ↓ | -12.2 | 553 | ↓ | 24.0 |
| Oct-21 | 263 | ↑ | 24.6 | 286 | ↑ | 26.5 | 323 | ↑ | 17.9 | 405 | ↑ | -7.1 | 580 | ↑ | 30.0 |
| Nov-21 | 305 | ↑ | 44.5 | 330 | ↑ | 46 | 370 | ↑ | 35.0 | 465 | ↑ | 6.7 | 650 | ↑ | 45.7 |
| Dec-21 | 308 | ↑ | 46 | 335 | ↑ | 48.2 | 370 | = | 35.0 | - | - | - | - | - | - |
| Jan-22 | 325 | ↑ | 54 | 355 | ↑ | 57.1 | 420 | ↑ | 53.3 | - | - | - | - | - | - |
| Feb-22 | 325 | = | 54 | 352 | ↓ | 55.8 | 394 | ↓ | 43.8 | - | - | - | - | - | - |
| Mar-22 | 324 | ↓ | 53.6 | 343 | ↓ | 51.8 | 384 | ↓ | 40.1 | - | - | - | - | - | - |
| Apr-22 | 344 | ↑ | 63 | 346 | ↑ | 53.1 | 410 | ↑ | 49.6 | - | - | - | - | - | - |
| May-22 | 385 | | 82.5 | 401 | ↑ | 77.4 | 430 | ↑ | 56.9 | - | - | - | - | - | - |
| Jun-22 | 367 | ↓ | 73.9 | 380 | ↓ | 68.1 | 409 | ↓ | 49.3 | - | - | - | - | - | - |
| Jul-22 | 344 | ↓ | 63 | 362 | ↓ | 60.2 | 382 | ↓ | 39.4 | - | - | - | - | - | - |
| Aug-22 | 364 | ↑ | 72.5 | 380 | ↑ | 68.1 | 413 | ↑ | 50.7 | - | - | - | - | - | - |
| Sep-22 | 338 | ↓ | 60.2 | 346 | ↓ | 53.1 | 383 | ↓ | 39.8 | - | - | - | - | - | - |
| Oct-22 | 240 | ↓ | 13.7 | 270 | ↓ | 19.5 | 305 | ↓ | 11.3 | - | - | - | - | - | - |
| Nov-22 | 266 | ↑ | 26.1 | 296 | ↑ | 31.0 | 326 | ↑ | 19.0 | - | - | - | - | - | - |
| Dec-22 | 269 | ↑ | 27.5 | 271 | ↓ | 19.9 | 310 | ↓ | 13.1 | - | - | - | - | - | - |
| Jan-23 | 204 | ↓ | -3.3 | 220 | ↓ | -2.7 | 315 | ↑ | 15.0 | - | - | - | - | - | - |
| Feb-23 | 213 | ↑ | 0.9 | 272 | ↑ | 20.4 | 300 | ↓ | 9.5 | - | - | - | - | - | - |
| Mar-23 | 216 | ↑ | 2.4 | 277 | ↑ | 22.6 | 307 | ↑ | 12.0 | - | - | - | - | - | - |
| Apr-23 | 246 | ↑ | 16.6 | 270 | ↓ | 19.5 | 309 | ↑ | 12.8 | - | - | - | - | - | - |
| May-23 | 229 | ↓ | 8.5 | 253 | ↓ | 11.9 | 280 | ↓ | 2.2 | - | - | - | - | - | - |
| June-23 | 220 | ↓ | 4.3 | 245 | ↓ | 8.4 | 279 | ↓ | 1.8 | - | - | - | - | - | - |
| July-23 | 198 | ↓ | -6.2 | 242 | ↓ | 7.1 | 280 | ↑ | 2.2 | - | - | - | - | - | - |
| Aug-23 | 199 | ↑ | -5.7 | 249 | ↑ | 10.2 | 275 | ↓ | 0.4 | - | - | - | - | - | - |
| Sep-23 | 202 | ↑ | -4.3 | 253 | ↑ | 11.9 | 277 | ↑ | 1.1 | - | - | - | - | - | - |

| | | | | | | | | | | | | | | | |
|--------|-----|---|------|-----|---|------|-----|---|------|---|---|---|---|---|---|
| Oct-23 | 218 | ↑ | 3.3 | 249 | ↓ | 10.2 | 258 | ↓ | -5.8 | - | - | - | - | - | - |
| Nov-23 | 222 | ↑ | 5.2 | 238 | ↓ | 5.3 | 252 | ↓ | -8.0 | - | - | - | - | - | - |
| Dec-23 | 206 | ↓ | -2.4 | 240 | ↑ | 6.2 | 265 | ↑ | -3.3 | - | - | - | - | - | - |
| Jan-24 | 206 | = | -2.4 | 240 | = | 6.2 | 255 | ↓ | -6.9 | - | - | - | - | - | - |
| Feb-24 | 215 | ↑ | 1.9 | 242 | ↑ | 7.1 | 272 | ↑ | -0.7 | - | - | - | - | - | - |
| Mar-24 | 216 | ↑ | 2.4 | 269 | ↑ | 19 | 271 | ↓ | -1.1 | - | - | - | - | - | - |
| Apr-24 | 214 | ↓ | 1.4 | 268 | ↓ | 18.6 | 269 | ↓ | -1.8 | - | - | - | - | - | - |
| May-24 | 213 | ↓ | 0.9 | 259 | ↓ | 14.6 | 281 | ↑ | 2.6 | - | - | - | - | - | - |
| Jun-24 | 259 | ↑ | 22.7 | 268 | ↑ | 18.6 | 309 | ↑ | 12.8 | - | - | - | - | - | - |
| Jul-24 | 233 | ↓ | 10.4 | 252 | ↓ | 11.5 | 310 | ↑ | 13.1 | - | - | - | - | - | - |
| Aug-24 | 233 | = | 10.4 | 252 | = | 11.5 | 310 | = | 13.1 | - | - | - | - | - | - |
| Sep-24 | 222 | ↓ | 5.2 | 260 | ↑ | 15.0 | 280 | ↓ | 2.2 | - | - | - | - | - | - |
| Oct-24 | 222 | = | 5.2 | 260 | = | 15.0 | 280 | = | 2.2 | - | - | - | - | - | - |
| Nov-24 | 220 | ↓ | 4.3 | 235 | ↓ | -4.0 | 266 | ↓ | -2.9 | - | - | - | - | - | - |
| Dec-24 | 220 | = | 4.3 | 235 | = | -4.0 | 266 | = | -2.9 | - | - | - | - | - | - |
| Jan-25 | 219 | ↓ | 3.8 | 234 | ↓ | -3.5 | 265 | ↓ | -3.3 | - | - | - | - | - | - |
| Feb-25 | 222 | ↑ | 5.2 | 236 | ↑ | 4.4 | 268 | ↑ | -2.2 | - | - | - | - | - | - |
| Mar-25 | 223 | ↑ | 5.7 | 239 | ↑ | 5.8 | 271 | ↑ | -1.1 | - | - | - | - | - | - |

Source: Regional Office of the Textile Commissioner, Ahmedabad

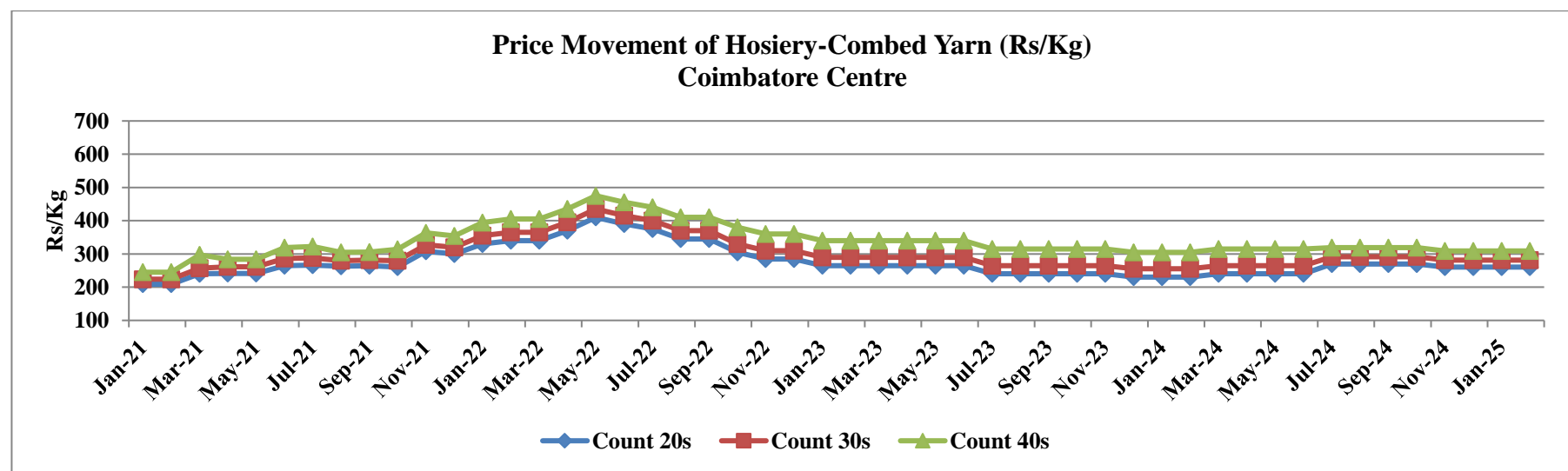
Price Movement of Cone-Combed Yarn (Rs/Kg)
Ahmedabad Centre



Annexure-II

| Market Price movement of Hosiery Combed Yarn (Rs/Kg) variety of cotton yarn Centre- wise details: Coimbatore | | | | | | | | | |
|---|-----------|-------------------------------------|---------------------------------|-----------|-------------------------------------|---------------------------------|-----------|-------------------------------------|---------------------------------|
| Month | Count 20s | increase or decrease wrt prev month | % growth with respect to Jan 21 | Count 30s | increase or decrease wrt prev month | % growth with respect to Jan 21 | Count 40s | increase or decrease wrt prev month | % growth with respect to Jan 21 |
| Jan-21 | 209 | - | | 224 | - | | 245 | - | |
| Feb-21 | 209 | = | 0.0 | 224 | = | 0.0 | 245 | = | 0.0 |
| Mar-21 | 240 | ↑ | 14.8 | 257 | ↑ | 14.7 | 297 | ↑ | 21.2 |
| Apr-21 | 241 | ↑ | 15.3 | 261 | ↑ | 16.5 | 284 | ↓ | 15.9 |
| May-21 | 241 | = | 15.3 | 261 | = | 16.5 | 284 | = | 15.9 |
| Jun-21 | 265 | ↑ | 26.8 | 286 | ↑ | 27.7 | 319 | ↑ | 30.2 |
| Jul-21 | 266 | ↑ | 27.3 | 288 | ↑ | 28.6 | 322 | ↑ | 31.4 |
| Aug-21 | 263 | ↓ | 25.8 | 280 | ↓ | 25.0 | 305 | ↓ | 24.5 |
| Sep-21 | 265 | ↑ | 26.8 | 281 | ↑ | 25.4 | 306 | ↑ | 24.9 |
| Oct-21 | 260 | ↓ | 24.4 | 280 | ↓ | 25.0 | 314 | ↑ | 28.2 |
| Nov-21 | 308 | ↑ | 47.4 | 327 | ↑ | 46.0 | 363 | ↑ | 48.2 |
| Dec-21 | 300 | ↓ | 43.5 | 320 | ↓ | 42.9 | 354 | ↓ | 44.5 |
| Jan-22 | 330 | ↑ | 57.9 | 355 | ↑ | 58.5 | 394 | ↑ | 60.8 |
| Feb-22 | 340 | ↑ | 62.7 | 365 | ↑ | 62.9 | 405 | ↑ | 65.3 |
| Mar-22 | 340 | = | 62.7 | 365 | = | 62.9 | 405 | = | 65.3 |
| Apr-22 | 370 | ↑ | 77.0 | 395 | ↑ | 76.3 | 435 | ↑ | 77.6 |
| May-22 | 410 | ↑ | 96.2 | 435 | ↑ | 94.2 | 475 | ↑ | 93.9 |
| Jun-22 | 390 | ↓ | 86.6 | 415 | ↓ | 85.3 | 455 | ↓ | 85.7 |
| Jul-22 | 375 | ↓ | 79.4 | 400 | ↓ | 78.6 | 440 | ↓ | 79.6 |
| Aug-22 | 345 | ↓ | 65.1 | 370 | ↓ | 65.2 | 410 | ↓ | 67.3 |
| Sep-22 | 345 | = | 65.1 | 370 | = | 65.2 | 410 | = | 67.3 |
| Oct-22 | 305 | ↓ | 45.9 | 330 | ↓ | 47.3 | 380 | ↓ | 55.1 |
| Nov-22 | 285 | ↓ | 36.4 | 310 | ↓ | 38.4 | 360 | ↓ | 46.9 |
| Dec-22 | 285 | = | 36.4 | 310 | = | 38.4 | 360 | = | 46.9 |
| Jan-23 | 265 | ↓ | 26.8 | 290 | ↓ | 29.5 | 340 | ↓ | 38.8 |
| Feb-23 | 265 | = | 26.8 | 290 | = | 29.5 | 340 | = | 38.8 |
| Mar-23 | 265 | = | 26.8 | 290 | = | 29.5 | 340 | = | 38.8 |
| Apr-23 | 265 | = | 26.8 | 290 | = | 29.5 | 340 | = | 38.8 |
| May-23 | 265 | = | 26.8 | 290 | = | 29.5 | 340 | = | 38.8 |
| June-23 | 265 | = | 26.8 | 290 | = | 29.5 | 340 | = | 38.8 |
| July-23 | 240 | ↓ | 14.8 | 265 | ↓ | 18.3 | 315 | ↓ | 28.6 |
| Aug-23 | 240 | = | 14.8 | 265 | = | 18.3 | 315 | = | 28.6 |

| | | | | | | | | | |
|---|-----|---|------|-----|---|------|-----|---|------|
| Sep-23 | 240 | = | 14.8 | 265 | = | 18.3 | 315 | = | 28.6 |
| Oct-23 | 240 | = | 14.8 | 265 | = | 18.3 | 315 | = | 28.6 |
| Nov-23 | 240 | = | 14.8 | 265 | = | 18.3 | 315 | = | 28.6 |
| Dec-23 | 230 | ↓ | 10.0 | 255 | ↓ | 13.8 | 305 | ↓ | 24.5 |
| Jan-24 | 230 | = | 10.0 | 255 | = | 13.8 | 305 | = | 24.5 |
| Feb-24 | 230 | = | 10.0 | 255 | = | 13.8 | 305 | = | 24.5 |
| Mar-24 | 240 | ↑ | 14.8 | 265 | ↑ | 18.3 | 315 | ↑ | 28.6 |
| Apr-24 | 240 | = | 14.8 | 265 | = | 18.3 | 315 | = | 28.6 |
| May-24 | 240 | = | 14.8 | 265 | = | 18.3 | 315 | = | 28.6 |
| Jun-24 | 240 | = | 14.8 | 265 | = | 18.3 | 315 | = | 28.6 |
| Jul-24 | 270 | ↑ | 29.2 | 291 | ↑ | 29.9 | 319 | ↑ | 30.2 |
| Aug-24 | 270 | = | 29.2 | 291 | = | 29.9 | 319 | = | 30.2 |
| Sep-24 | 270 | = | 29.2 | 291 | = | 29.9 | 319 | = | 30.2 |
| Oct-24 | 270 | = | 29.2 | 291 | = | 29.9 | 319 | = | 30.2 |
| Nov-24 | 260 | ↓ | 24.4 | 281 | ↓ | 25.4 | 309 | ↓ | 26.1 |
| Dec-24 | 260 | = | 24.4 | 281 | = | 25.4 | 309 | = | 26.1 |
| Jan-25 | 260 | = | 24.4 | 281 | = | 25.4 | 309 | = | 26.1 |
| Feb-25 | 260 | = | 24.4 | 281 | = | 25.4 | 309 | = | 26.1 |
| Mar-25 | 260 | = | 24.4 | 281 | = | 25.4 | 309 | = | 26.1 |
| Source: Regional Office of the Textile Commissioner, Coimbatore | | | | | | | | | |



| Market Price movement of Hosiery Combed Yarn (Rs/Kg) variety of cotton yarn Centre- wise details: Amritsar | | | | | | | | | |
|--|-----------|-------------------------------------|---------------------------------|-----------|-------------------------------------|---------------------------------|-----------|-------------------------------------|---------------------------------|
| Month | Count 20s | increase or decrease wrt prev month | % growth with respect to Jan 21 | Count 30s | increase or decrease wrt prev month | % growth with respect to Jan 21 | Count 40s | increase or decrease wrt prev month | % growth with respect to Jan 21 |
| Jan-21 | 231 | - | | 240 | - | | 265 | - | |
| Feb-21 | 241 | ↑ | 4.3 | 242 | ↑ | 0.8 | 272 | ↑ | 2.6 |
| Mar-21 | 262 | ↑ | 13.4 | 258 | ↑ | 7.5 | 281 | ↑ | 6.0 |
| Apr-21 | 261 | ↓ | 13.0 | 270 | ↑ | 12.5 | 303 | ↑ | 14.3 |
| May-21 | 259 | ↓ | 12.1 | 269 | ↓ | 12.1 | 298 | ↓ | 12.5 |
| Jun-21 | 263 | ↑ | 13.9 | 261 | ↓ | 8.8 | 304 | ↑ | 14.7 |
| Jul-21 | 263 | = | 13.9 | 266 | ↑ | 10.8 | 303 | ↓ | 14.3 |
| Aug-21 | 264 | ↑ | 14.3 | 270 | ↑ | 12.5 | 308 | ↑ | 16.2 |
| Sep-21 | 270 | ↑ | 16.9 | 272 | ↑ | 13.3 | 303 | ↓ | 14.3 |
| Oct-21 | 270 | = | 16.9 | 274 | ↑ | 14.2 | 309 | ↑ | 16.6 |
| Nov-21 | 291 | ↑ | 26.0 | 315 | ↑ | 31.3 | 353 | ↑ | 33.2 |
| Dec-21 | 310 | ↑ | 34.2 | 328 | ↑ | 36.7 | 362 | ↑ | 36.6 |
| Jan-22 | 321 | ↑ | 39.0 | 342 | ↑ | 42.5 | 370 | ↑ | 39.6 |
| Feb-22 | 328 | ↑ | 42.0 | 368 | ↑ | 53.3 | 370 | = | 39.6 |
| Mar-22 | 326 | ↓ | 41.1 | 365 | ↓ | 52.1 | 368 | ↓ | 38.9 |
| Apr-22 | 348 | ↑ | 50.6 | 379 | ↑ | 57.9 | 391 | ↑ | 47.5 |
| May-22 | 369 | ↑ | 59.7 | 390 | ↑ | 62.5 | 415 | ↑ | 56.6 |
| Jun-22 | 381 | ↑ | 64.9 | 402 | ↑ | 67.5 | 422 | ↑ | 59.2 |
| Jul-22 | 383 | ↑ | 65.8 | 390 | ↓ | 62.5 | 412 | ↓ | 55.5 |
| Aug-22 | 355 | ↓ | 53.7 | 368 | ↓ | 53.3 | 395 | ↓ | 49.1 |
| Sep-22 | 335 | ↓ | 45.0 | 353 | ↓ | 47.1 | 394 | ↓ | 48.7 |
| Oct-22 | 347 | ↑ | 50.2 | 340 | ↓ | 41.7 | - | - | - |
| Nov-22 | 306 | ↓ | 32.5 | 312 | ↓ | 30.0 | 356 | — | 34.3 |
| Dec-22 | - | - | - | 284 | ↓ | 18.3 | - | - | - |
| Jan-23 | - | - | - | 260 | ↓ | 8.3 | 286 | — | 7.9 |
| Feb-23 | 258 | — | 11.7 | 265 | ↑ | 10.4 | 293 | ↑ | 10.6 |
| Mar-23 | 265 | ↑ | 14.7 | 270 | ↑ | 12.5 | 297 | ↑ | 12.1 |
| Apr-23 | 269 | ↑ | 16.5 | - | - | - | 291 | ↓ | 9.8 |
| May-23 | - | - | - | - | - | - | 291 | = | 9.8 |
| June-23 | 242 | — | 4.8 | 251 | - | 4.6 | - | - | - |
| July-23 | 255 | ↑ | 10.4 | - | - | - | 281 | - | 6.0 |
| Aug-23 | 270 | ↑ | 16.9 | 267 | - | 11.3 | - | - | - |
| Sep-23 | - | - | - | 241 | ↓ | 0.4 | - | - | - |
| Oct-23 | - | - | - | - | - | - | - | - | - |

| | | | | | | | | | |
|--------|---|---|---|-----|---|------|---|---|---|
| Nov-23 | - | - | - | 237 | - | -1.3 | - | - | - |
| Dec-23 | - | - | - | 232 | ↓ | -3.3 | - | - | - |
| Jan-24 | - | - | - | 247 | ↑ | 2.9 | - | - | - |
| Feb-24 | - | - | - | 247 | = | 2.9 | - | - | - |
| Mar-24 | - | - | - | 227 | ↓ | -5.4 | - | - | - |
| Apr-24 | - | - | - | 247 | ↑ | 2.9 | - | - | - |
| May-24 | - | - | - | 247 | = | 2.9 | - | - | - |
| Jun-24 | - | - | - | 247 | = | 2.9 | - | - | - |
| Jul-24 | - | - | - | 247 | = | 2.9 | - | - | - |
| Aug-24 | - | - | - | 247 | = | 2.9 | - | - | - |
| Sep-24 | - | - | - | 247 | = | 2.9 | - | - | - |
| Oct-24 | - | - | - | 247 | = | 2.9 | - | - | - |
| Nov-24 | - | - | - | 247 | = | 2.9 | - | - | - |
| Dec-24 | - | - | - | 241 | ↓ | 0.4 | - | - | - |
| Jan-25 | - | - | - | 249 | ↑ | 3.8 | - | - | - |
| Feb-25 | - | - | - | 250 | ↑ | 4.2 | - | - | - |
| Mar-25 | - | - | - | 249 | ↓ | 3.8 | - | - | - |

Source: Regional Office of the Textile Commissioner, Amritsar

Note: J-34 variety of cotton is used in production of Hosiery combed variety of cotton yarn

